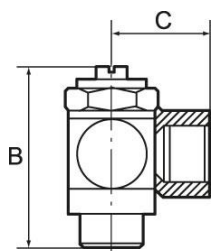


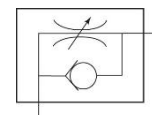
## Unidirectional flow control valves - adjustable with slotted-head screwdriver

For throttling flow rates and regulating the piston speed of cylinders. Small dimensions, ideal for tight spaces. To be screwed directly into the valve or cylinder. The set flow rate can be locked via the lock nut in the version with knurled screw. The variants in banjo bolt construction can be rotated during assembly and are fixed after tightening. The variants with plug-in connector, rotating can also be rotated freely after assembly. The seals and lubricants used are silicone-free.

Operating pressure	0 to 10 bar
Temperature range	-20 °C to 80 °C
Body	Nickel-plated brass
Sealant	NBR
Captive seals	Polyamide glass fibre-reinforced (only parts with banjo bolt construction)

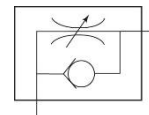
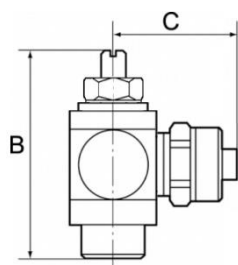


357.005-M5



### Unidirectional flow control valve, supply air throttle (V), screw connection, banjo bolt construction

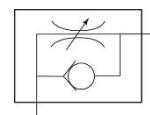
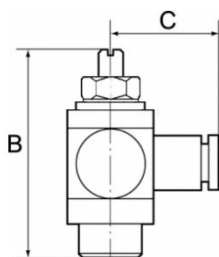
Art. No.	Type No.	Thread	Connection	a/f mm	B mm	C mm
106875	357.005-M5	M5	M5 female thread	8	24.5	11.5
106876	357.018-1/8	G 1/8	G 1/8 female thread	14	32.0	16.0
106877	357.014-1/4	G 1/4	G 1/4 female thread	17	40.0	22.0
106878	357.038-3/8	G 3/8	G 3/8 female thread	20	50.0	26.0



357.014-6

### Unidirectional flow control valve, supply air throttle (V), quick lock screw fitting, banjo bolt construction

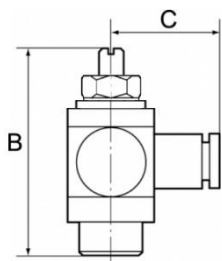
Art. No.	Type No.	Thread	for pipe mm	a/f mm	B mm	C mm
106879	357.005-4	M5	4/2.5	8	24.5	18.0
106880	357.005-5	M5	5/3	8	24.5	19.0
106881	357.005-6	M5	6/4	8	24.5	19.0
106882	357.018-5	G 1/8	5/3	14	32.0	23.0
106883	357.018-6	G 1/8	6/4	14	32.0	25.0
106884	357.018-8	G 1/8	8/6	14	32.0	25.0
106885	357.014-6	G 1/4	6/4	17	40.0	26.5
106886	357.014-8	G 1/4	8/6	17	40.0	27.5
106887	357.014-10	G 1/4	10/8	17	40.0	28.5
106888	357.038-10	G 3/8	10/8	20	50.0	30.5



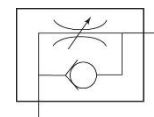
342.014-6

### Unidirectional flow control valve, supply air throttle (V), plug-in connector, banjo bolt construction

Art. No.	Type No.	Thread	for pipe mm	a/f mm	B mm	C mm
106889	342.005-4	M5	4	8	24.5	18.6
106890	342.005-6	M5	6	8	24.5	21.7
106891	342.018-4	G 1/8	4	14	32.0	20.6
106892	342.018-6	G 1/8	6	14	32.0	22.7
106893	342.018-8	G 1/8	8	14	32.0	23.7
106894	342.014-6	G 1/4	6	17	40.0	24.2
106895	342.014-8	G 1/4	8	17	40.0	24.7
106896	342.014-10	G 1/4	10	17	40.0	26.8
106897	342.038-10	G 3/8	10	20	50.0	28.3

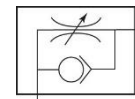
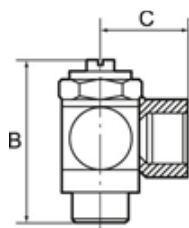


342.018-6-D



### Unidirectional flow control valve, supply air throttle (V), plug-in connector, rotating

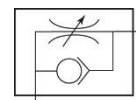
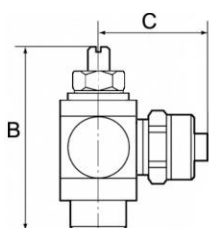
Art. No.	Type No.	Thread	for pipe mm	a/f mm	B mm	C mm
106280	342.005-4-D	M5	4	6	25.5	18.5
106281	342.005-6-D	M5	6	6	25.5	21.5
106282	342.018-4-D	G 1/8	4	9	31.8	20.5
109971	342.018-6-D	G 1/8	6	9	31.8	22.5
110107	342.018-8-D	G 1/8	8	9	31.8	23.5
112972	342.014-6-D	G 1/4	6	10	39.5	24.0
112978	342.014-8-D	G 1/4	8	10	39.5	24.5
112982	342.014-10-D	G 1/4	10	10	39.5	27.0
113033	342.038-8-D	G 3/8	8	14	50.0	26.5
113726	342.038-10-D	G 3/8	10	14	50.0	29.0



358.005-M5

### Unidirectional flow control valve, discharge throttle (C), screw connection, banjo bolt construction

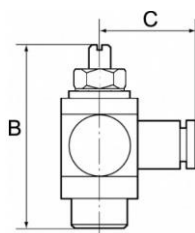
Art. No.	Type No.	Thread	Connection mm	a/f mm	B mm	C mm
106919	358.005-M5	M5	M5 female thread	8	24.5	11.5
106920	358.018-1/8	G 1/8	G 1/8 female thread	14	32.0	16.0
106921	358.014-1/4	G 1/4	G 1/4 female thread	17	40.0	22.0
106922	358.038-3/8	G 3/8	G 3/8 female thread	20	50.0	26.0
106923	358.012-1/2	G 1/2	G 1/2 female thread	26	61.0	32.0



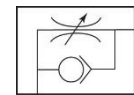
358.014-6

### Unidirectional flow control valve, discharge throttle (C), quick lock screw fitting, banjo bolt construction

Art. No.	Type No.	Thread	for pipe mm	a/f mm	B mm	C mm
106924	358.005-4	M5	4/2.5	8	24.5	18.0
106925	358.005-5	M5	5/3	8	24.5	19.0
106926	358.005-6	M5	6/4	8	24.5	19.0
106927	358.018-5	G 1/8	5/3	14	32.0	23.0
106928	358.018-6	G 1/8	6/4	14	32.0	25.0
106929	358.018-8	G 1/8	8/6	14	32.0	25.0
106930	358.014-6	G 1/4	6/4	17	40.0	26.5
106931	358.014-8	G 1/4	8/6	17	40.0	27.5
106932	358.014-10	G 1/4	10/8	17	40.0	28.5
106933	358.038-10	G 3/8	10/8	20	50.0	30.5

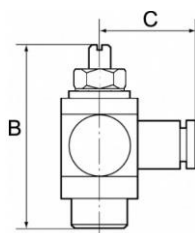


343.014-6

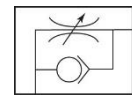


### Unidirectional flow control valve, discharge throttle (C), plug-in connector, banjo bolt construction

Art. No.	Type No.	Thread	for pipe mm	a/f mm	B mm	C mm
106934	343.005-4	M5	4	8	24.5	18.6
106935	343.005-6	M5	6	8	24.5	21.7
106936	343.018-4	G 1/8	4	14	32.0	20.6
106937	343.018-6	G 1/8	6	14	32.0	22.7
106938	343.018-8	G 1/8	8	14	32.0	23.7
106939	343.014-6	G 1/4	6	17	40.0	24.2
106940	343.014-8	G 1/4	8	17	40.0	24.7
106941	343.014-10	G 1/4	10	17	40.0	26.8
106942	343.038-10	G 3/8	10	20	50.0	28.8



343.018-6-D



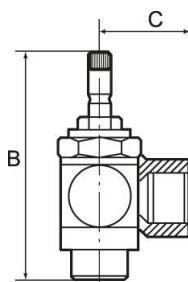
### Unidirectional flow control valve, discharge throttle (C), plug-in connector, rotating

Art. No.	Type No.	Thread	for pipe mm	a/f mm	B mm	C mm
115702	343.005-4-D	M5	4	6	25.5	18.5
115703	343.005-6-D	M5	6	6	25.5	21.5
115704	343.018-4-D	G 1/8	4	9	31.8	20.5
115705	343.018-6-D	G 1/8	6	9	31.8	22.5
115706	343.018-8-D	G 1/8	8	9	31.8	23.5
115809	343.014-6-D	G 1/4	6	10	39.5	24.0
116338	343.014-8-D	G 1/4	8	10	39.5	24.5
116339	343.014-10-D	G 1/4	10	10	39.5	27.0
116500	343.038-8-D	G 3/8	8	14	50.0	26.5
116502	343.038-10-D	G 3/8	10	14	50.0	29.0

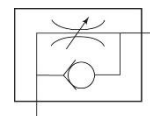
## Unidirectional flow control valves - adjustable with knurled screw

For throttling flow rates and regulating the piston speed of cylinders. Small dimensions, ideal for tight spaces. To be screwed directly into the valve or cylinder. The set flow rate can be locked via the lock nut in the version with knurled screw. The variants in banjo bolt construction can be rotated during assembly and are fixed after tightening. The variants with plug-in connector, rotating can also be rotated freely after assembly. The seals and lubricants used are silicone-free.

Operating pressure	0 to 10 bar
Temperature range	-20 °C to 80 °C
Body	Nickel-plated brass
Sealant	NBR
Captive seals	Polyamide glass fibre-reinforced (only parts with banjo bolt construction)

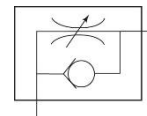
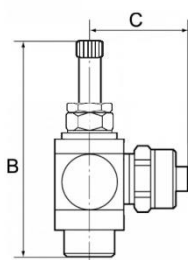


339.005-M5



### Unidirectional flow control valve, supply air throttle (V), screw connection, banjo bolt construction

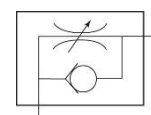
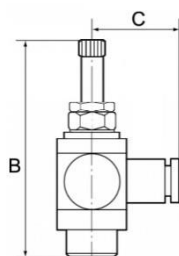
Art. No.	Type No.	Thread	Connection	a/f mm	B mm	C mm
106898	339.005-M5	M5	M5 female thread	8	38.9	11.5
106899	339.018-1/8	G 1/8	G 1/8 female thread	14	42.4	16.0
106900	339.014-1/4	G 1/4	G 1/4 female thread	17	51.0	22.0
106901	339.038-3/8	G 3/8	G 3/8 female thread	20	63.0	26.0



339.014-6

### Unidirectional flow control valve, supply air throttle (V), quick lock screw fitting, banjo bolt construction

Art. No.	Type No.	Thread	for pipe mm	a/f mm	B mm	C mm
106902	339.005-4	M5	4/2.5	8	38.9	18.0
106903	339.005-5	M5	5/3	8	38.9	19.0
106904	339.005-6	M5	6/4	8	38.9	19.0
106905	339.018-5	G 1/8	5/3	14	42.4	23.0
106906	339.018-6	G 1/8	6/4	14	42.4	25.0
106907	339.018-8	G 1/8	8/6	14	42.4	25.0
106908	339.014-6	G 1/4	6/4	17	51.4	26.5
106909	339.014-8	G 1/4	8/6	17	51.4	27.5
106910	339.014-10	G 1/4	10/8	17	51.4	28.5

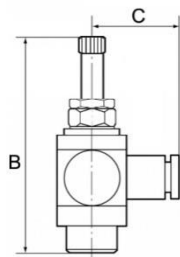


341.014-8

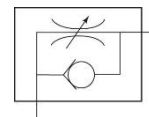
### Unidirectional flow control valve, supply air throttle (V), plug-in connector, banjo bolt construction

Art. No.	Type No.	Thread	for pipe mm	a/f mm	B mm	C mm
106911	341.005-4	M5	4	8	38.9	18.6
106912	341.005-6	M5	6	8	38.9	21.7
106913	341.018-4	G 1/8	4	14	42.4	20.6
106914	341.018-6	G 1/8	6	14	42.4	22.7
106915	341.018-8	G 1/8	8	14	42.4	23.7
106916	341.014-6	G 1/4	6	17	51.4	24.2
106917	341.014-8	G 1/4	8	17	51.4	24.7
106918	341.014-10	G 1/4	10	17	51.4	26.8



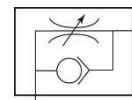
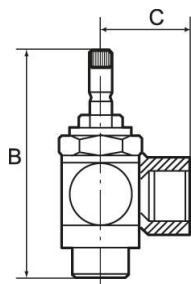


341.018-6-D



### Unidirectional flow control valve, supply air throttle (V), plug-in connector, rotating

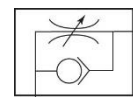
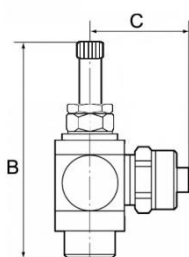
Art. No.	Type No.	Thread	for pipe mm	a/f mm	B mm	C mm
113728	341.005-4-D	M5	4	6	39.4	18.5
113730	341.005-6-D	M5	6	6	39.4	21.5
113739	341.018-4-D	G 1/8	4	9	41.9	20.5
113741	341.018-6-D	G 1/8	6	9	41.9	22.5
113743	341.018-8-D	G 1/8	8	9	41.9	23.5
113790	341.014-6-D	G 1/4	6	10	50.8	24.0
113809	341.014-8-D	G 1/4	8	10	50.8	24.5
114526	341.014-10-D	G 1/4	10	10	50.8	27.0
115700	341.038-8-D	G 3/8	8	14	63.5	26.5
115701	341.038-10-D	G 3/8	10	14	63.5	29.0



333.014-1/4

### Unidirectional flow control valve, discharge throttle (C), screw connection, banjo bolt construction

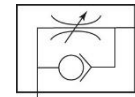
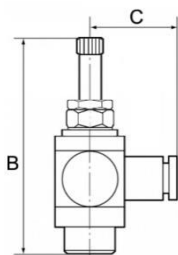
Art. No.	Type No.	Thread	Connection mm	a/f mm	B mm	C mm
106943	333.005-M5	M5	M5 female thread	8	38.9	11.5
106944	333.018-1/8	G 1/8	G 1/8 female thread	14	42.0	16.0
106945	333.014-1/4	G 1/4	G 1/4 female thread	17	51.0	22.0
106946	333.038-3/8	G 3/8	G 3/8 female thread	20	63.0	26.0
106947	333.012-1/2	G 1/2	G 1/2 female thread	26	81.0	32.0



333.005-6

### Unidirectional flow control valve, discharge throttle (C), quick lock screw fitting, banjo bolt construction

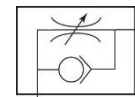
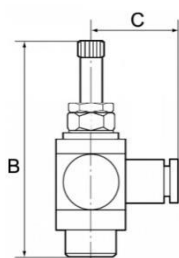
Art. No.	Type No.	Thread	for pipe mm	a/f mm	B mm	C mm
106948	333.005-4	M5	4/2.5	8	38.9	18.0
106949	333.005-5	M5	5/3	8	38.9	19.0
106950	333.005-6	M5	6/4	8	38.9	19.0
106951	333.018-6	G 1/8	6/4	14	42.4	25.0
106952	333.018-8	G 1/8	8/6	14	42.4	25.0
106953	333.014-6	G 1/4	6/4	17	51.4	26.5
106954	333.014-8	G 1/4	8/6	17	51.4	27.5
106955	333.014-10	G 1/4	10/8	17	51.4	28.5



340.014-6

### Unidirectional flow control valve, discharge throttle (C), plug-in connector, banjo bolt construction

Art. No.	Type No.	Thread	for pipe mm	a/f mm	B mm	C mm
106956	340.005-4	M5	4	8	38.9	18.6
106957	340.005-6	M5	6	8	38.9	21.7
106958	340.018-4	G 1/8	4	14	42.4	20.6
106959	340.018-6	G 1/8	6	14	42.4	22.7
106960	340.018-8	G 1/8	8	14	42.4	23.7
106961	340.014-6	G 1/4	6	17	51.4	24.2
106962	340.014-8	G 1/4	8	17	51.4	24.7
106963	340.014-10	G 1/4	10	17	51.4	26.8



340.018-6-D

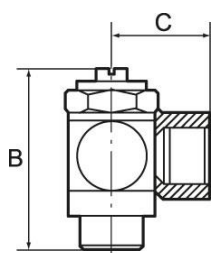
### Unidirectional flow control valve, discharge throttle (C), plug-in connector, rotating

Art. No.	Type No.	Thread	for pipe mm	a/f mm	B mm	C mm
116739	340.005-4-D	M5	4	6	39.4	18.5
116744	340.005-6-D	M5	6	6	39.4	21.5
116799	340.018-4-D	G 1/8	4	9	41.9	20.5
116807	340.018-6-D	G 1/8	6	9	41.9	22.5
116810	340.018-8-D	G 1/8	8	9	41.9	23.5
116820	340.014-6-D	G 1/4	6	10	50.8	24.0
116831	340.014-8-D	G 1/4	8	10	50.8	24.5
116832	340.014-10-D	G 1/4	10	10	50.8	27.0
116833	340.038-8-D	G 3/8	8	14	63.5	26.5
116834	340.038-10-D	G 3/8	10	14	63.5	29.0

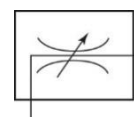
## Bidirectional flow control valves - adjustable with slotted-head screwdriver

For throttling flow rates and regulating the piston speed of cylinders. Small dimensions, ideal for tight spaces. To be screwed directly into the valve or cylinder. The set flow rate can be locked via the lock nut in the version with knurled screw. The variants in banjo bolt construction can be rotated during assembly and are fixed after tightening. The variants with plug-in connector, rotating can also be rotated freely after assembly. The seals and lubricants used are silicone-free.

Operating pressure	0 to 10 bar
Temperature range	-20 °C to 80 °C
Body	Nickel-plated brass
Sealant	NBR
Captive seals	Polyamide glass fibre-reinforced (only parts with banjo bolt construction)

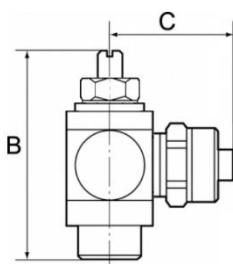


359.005-M5

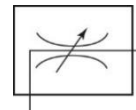


### Bidirectional flow control valve, both directions throttling (B), screw connection, banjo bolt construction

Art. No.	Type No.	Thread	Connection	a/f mm	B mm	C mm
106964	359.005-M5	M5	M5 female thread	8	24.5	11.5
106965	359.018-1/8	G 1/8	G 1/8 female thread	14	32.0	16.0
106966	359.014-1/4	G 1/4	G 1/4 female thread	17	40.0	22.0
106967	359.038-3/8	G 3/8	G 3/8 female thread	20	50.0	26.0
106968	359.012-1/2	G 1/2	G 1/2 female thread	26	61.0	32.0

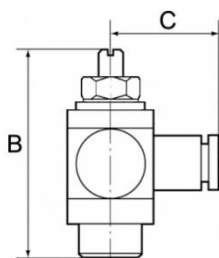


359.014-6

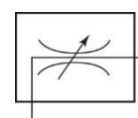


### Bidirectional flow control valve, both directions throttling (B), quick lock screw fitting, banjo bolt construction

Art. No.	Type No.	Thread	for pipe mm	a/f mm	B mm	C mm
106969	359.005-4	M5	4/2.5	8	24.5	18.0
106970	359.005-5	M5	5/3	8	24.5	19.0
106971	359.005-6	M5	6/4	8	24.5	19.0
106972	359.018-5	G 1/8	5/3	14	32.0	23.0
106973	359.018-6	G 1/8	6/4	14	32.0	25.0
106974	359.018-8	G 1/8	8/6	14	32.0	25.0
106975	359.014-6	G 1/4	6/4	17	40.0	26.5
106976	359.014-8	G 1/4	8/6	17	40.0	27.5
106977	359.014-10	G 1/4	10/8	17	40.0	28.5
106978	359.038-10	G 3/8	10/8	20	50.0	30.5

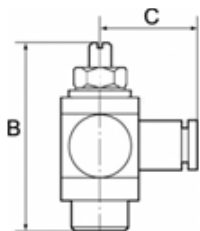


344.014-6

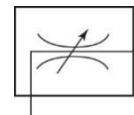


### Bidirectional flow control valve, both directions throttling (B), plug-in connector, banjo bolt construction

Art. No.	Type No.	Thread	for pipe mm	a/f mm	B mm	C mm
106979	344.005-4	M5	4	8	24.5	18.6
106980	344.005-6	M5	6	8	24.5	21.7
106981	344.018-4	G 1/8	4	14	32.0	20.6
106982	344.018-6	G 1/8	6	14	32.0	22.7
106983	344.018-8	G 1/8	8	14	32.0	23.7
106984	344.014-6	G 1/4	6	17	40.0	24.2
106985	344.014-8	G 1/4	8	17	40.0	24.7
106986	344.014-10	G 1/4	10	17	40.0	26.8
106987	344.038-10	G 3/8	10	20	50.0	28.8



344.018-6-D



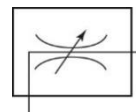
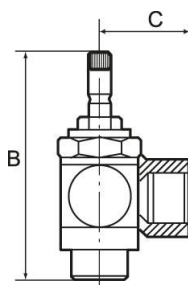
**Bidirectional flow control valve, both directions throttling (B), plug-in connector, rotating**

Art. No.	Type No.	Thread	for pipe mm	a/f mm	B mm	C mm
116835	344.005-4-D	M5	4	6	25.5	18.5
116836	344.005-6-D	M5	6	6	25.5	21.5
116844	344.018-4-D	G 1/8	4	9	31.8	20.5
116845	344.018-6-D	G 1/8	6	9	31.8	22.5
116846	344.018-8-D	G 1/8	8	9	31.8	23.5
116847	344.014-6-D	G 1/4	6	10	39.5	24.0
116848	344.014-8-D	G 1/4	8	10	39.5	24.5
116872	344.014-10-D	G 1/4	10	10	39.5	27.0
116924	344.038-8-D	G 3/8	8	14	50.0	26.5
116942	344.038-10-D	G 3/8	10	14	50.0	29.0

## Bidirectional flow control valves - adjustable with knurled screw

For throttling flow rates and regulating the piston speed of cylinders. Small dimensions, ideal for tight spaces. To be screwed directly into the valve or cylinder. The set flow rate can be locked via the lock nut in the version with knurled screw. The variants in banjo bolt construction can be rotated during assembly and are fixed after tightening. The variants with plug-in connector, rotating can also be rotated freely after assembly. The seals and lubricants used are silicone-free.

Operating pressure	0 to 10 bar
Temperature range	-20 °C to 80 °C
Body	Nickel-plated brass
Sealant	NBR
Captive seals	Polyamide glass fibre-reinforced (only parts with banjo bolt construction)

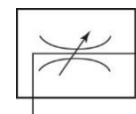
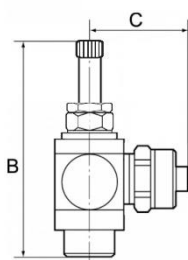


337.018-1/8

### Bidirectional flow control valve, both directions throttling (B), screw connection, banjo bolt construction

Art. No.	Type No.	Thread	Connection	a/f mm	B mm	C mm
106988	337.005-M5	M5	M5 female thread	8	38.9	11.5
106989	337.018-1/8	G 1/8	G 1/8 female thread	14	42.0	16.0
106990	337.014-1/4	G 1/4	G 1/4 female thread	17	51.0	22.0
106991	337.038-3/8	G 3/8	G 3/8 female thread	20	63.0	26.0
106992	337.012-1/2	G 1/2	G 1/2 female thread	26	81.0	32.0

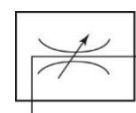
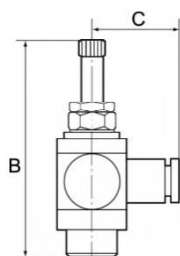




337.014-6

**Bidirectional flow control valve, both directions throttling (B), quick lock screw fitting, banjo bolt construction**

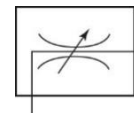
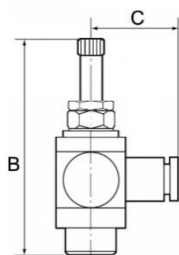
Art. No.	Type No.	Thread	for pipe mm	a/f mm	B mm	C mm
106993	337.005-4	M5	4/2.5	8	38.9	18.0
106994	337.005-5	M5	5/3	8	38.9	19.0
106995	337.005-6	M5	6/4	8	38.9	19.0
106996	337.018-5	G 1/8	5/3	14	42.0	23.0
106997	337.018-6	G 1/8	6/4	14	42.0	25.0
106998	337.018-8	G 1/8	8/6	14	42.0	25.0
106999	337.014-6	G 1/4	6/4	17	51.0	26.5
107000	337.014-8	G 1/4	8/6	17	51.0	27.5
107001	337.014-10	G 1/4	10/8	17	51.0	28.5



338.014-6

**Bidirectional flow control valve, both directions throttling (B), plug-in connector, banjo bolt construction**

Art. No.	Type No.	Thread	for pipe mm	a/f mm	B mm	C mm
107002	338.005-4	M5	4	8	38.9	18.6
107003	338.018-4	G 1/8	4	14	42.0	20.6
107004	338.018-6	G 1/8	6	14	42.0	22.7
107005	338.018-8	G 1/8	8	14	42.0	23.7
107006	338.014-6	G 1/4	6	17	51.0	24.2
107007	338.014-8	G 1/4	8	17	51.0	24.7
107008	338.014-10	G 1/4	10	17	51.0	26.8

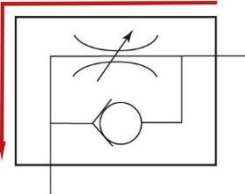
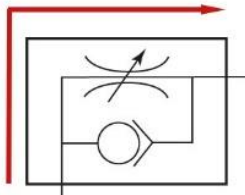


338.018-6-D

**Bidirectional flow control valve, both directions throttling (B), plug-in connector, rotating**

Art. No.	Type No.	Thread	for pipe mm	a/f mm	B mm	C mm
116953	338.005-4-D	M5	4	6	39.4	18.5
116954	338.005-6-D	M5	6	6	39.4	21.5
116955	338.018-4-D	G 1/8	4	9	41.9	20.5
116956	338.018-6-D	G 1/8	6	9	41.9	22.5
116957	338.018-8-D	G 1/8	8	9	41.9	23.5
116958	338.014-6-D	G 1/4	6	10	50.8	24.0
116959	338.014-8-D	G 1/4	8	10	50.8	24.5
116960	338.014-10-D	G 1/4	10	10	50.8	27.0
116961	338.038-8-D	G 3/8	8	14	63.5	26.5
116962	338.038-10-D	G 3/8	10	14	63.5	29.0

**Markings for valve functions**

Marking (alphabetical code)	Art. No.	Pneumatic / electrical symbol
<b>Supply air throttle</b>		
<b>V</b>	Unidirectional flow control valves Art. No. 106875 to 113726 Art. No. 106898 to 115701	
<b>Discharge throttle</b>		
<b>C</b>	Unidirectional flow control valves Art. No. 106919 to 116502 Art. No. 106943 to 116834	
<b>Both directions throttling</b>		
<b>B</b>	Bidirectional flow control valves Art. No. 106964 to 116942 Art. No. 106988 to 116962	